

# Guide to SET

An Overview of Selection and Training 2021

---

## CONTENTS

Introduction	4
About RACS	5
How do I become a Surgeon in Australia and New Zealand?	5
Indigenous Health Committee	6
JDocs by RACS	6
Essential Surgical Skills	6
RACS Trainees' Association (RACSTA)	7
RACS Values and Ten Competencies	8
SET Selection	11
Selection Registration	12
Eligibility Requirements	13
Criminal Checks	14
Former Trainees Seeking to Re-apply to SET	14
Invitation to Apply	14
Registration and Application Fees	14
Application to the SET Program	15
Selection Instruments	15
Online Application Form	15
Situational Judgement Test	15
Generic Surgical Sciences Examination (GSSE)	16
Structured Referee Reports	16
Interviews	16
Announcement of Offers	16
The SET Program	19
Assessment Tools	19
SET Trainee Registration and Variation	20
Recognition of Prior Learning (RPL)	21
Health and Wellbeing (RACS Support Program)	21
Skills Courses	22
Examinations	25
Surgical Specialties	29
General Surgery Australia	31
General Surgery New Zealand	32
Neurosurgery	33
Orthopaedic Surgery Australia	35

Orthopaedic Surgery New Zealand	36
Otolaryngology Head and Neck Surgery	37
Paediatric Surgery	38
Plastic and Reconstructive Surgery Australia	39
Plastic and Reconstructive Surgery New Zealand	40
Urology	41
Vascular Surgery	42
Contacts	45
Appendix One: e-Modules	48
Appendix Two: Examinations	50
Appendix Three: Specialty Societies and Selection Guidelines	51
Appendix Four: Selection Checklist	53

the fact that the *de novo* mutation rate is low, the *de novo* mutation rate is not the only source of genetic variation.

There are several other sources of genetic variation, including recombination, gene flow, and selection.

Recombination is the process by which genetic material is exchanged between chromosomes during meiosis.

Gene flow is the movement of genetic material from one population to another.

Selection is the process by which certain genetic traits are favored over others, leading to changes in the frequency of those traits in a population.

These sources of genetic variation are all important in the evolution of a species.

Understanding the sources of genetic variation is essential for understanding the process of evolution.

By studying the sources of genetic variation, we can gain a better understanding of the forces that shape the diversity of life on Earth.

This knowledge is also important for understanding the genetic basis of many human diseases.

By studying the sources of genetic variation, we can develop better strategies for preventing and treating these diseases.

In conclusion, the sources of genetic variation are a complex and fascinating topic that is central to the study of evolution and genetics.

By studying these sources, we can gain a deeper understanding of the forces that shape the diversity of life on Earth.

This knowledge is also important for understanding the genetic basis of many human diseases.

By studying the sources of genetic variation, we can develop better strategies for preventing and treating these diseases.

In conclusion, the sources of genetic variation are a complex and fascinating topic that is central to the study of evolution and genetics.

By studying these sources, we can gain a deeper understanding of the forces that shape the diversity of life on Earth.

This knowledge is also important for understanding the genetic basis of many human diseases.

By studying the sources of genetic variation, we can develop better strategies for preventing and treating these diseases.

In conclusion, the sources of genetic variation are a complex and fascinating topic that is central to the study of evolution and genetics.

By studying these sources, we can gain a deeper understanding of the forces that shape the diversity of life on Earth.

---

# Introduction

Welcome to the Royal Australasian College of Surgeons (RACS).

This Guide provides a general overview of the Surgical Education and Training (SET) Program in the nine specialties of RACS.

Surgery is a demanding but rewarding career. Surgeons make a significant positive impact in peoples' lives and in the wider health and wellbeing of communities. It is a popular choice for early career doctors with 693 applications to all nine specialties in 2020 for approximately 220 training posts.

I hope that this guide will help you to decide if a career in surgery is for you, how to get selected and what will be expected of you throughout your training.

SET Selection information for the following year is published in November each year. As requirements and timelines can change from year to year, potential applicants should refer to current information published on the RACS website and the relevant Specialist Society websites.

I wish you well in your studies and application to become a surgeon of the future in Australia and New Zealand.

Professor Julian Archer,  
Executive General Manager, Education.

## About RACS

RACS's purpose is to promote excellence in surgical training and practice in Australia and New Zealand.

RACS represents around 6,700 Surgeons and 1,300 surgical Trainees and Specialist International Medical Graduates.

Training is offered in nine surgical specialties through the Surgical Education and Training (SET) program:

- **Cardiothoracic Surgery**
- **General Surgery**
- **Neurosurgery**
- **Orthopaedic Surgery**
- **Otolaryngology, Head and Neck Surgery**
- **Paediatric Surgery**
- **Plastic and Reconstructive Surgery**
- **Urology**
- **Vascular Surgery**

RACS conducts a comprehensive selection, training, examination, accreditation and assessment program to maintain high standards of surgical services, which in turn ensures that Trainees become safe and competent surgeons.

## How do I become a Surgeon in Australia and New Zealand?

To become a surgeon you must first complete a medical degree and gain general medical registration to be able practise as a doctor in Australia or New Zealand.

Please refer to the following websites for current information on how to obtain general, unconditional medical registration.

- in Australia:  
[Australian Medical Council](#) (AMC)  
[Australian Health Practitioner Regulation Agency](#) (AHPRA)
- in New Zealand:  
[Medical Council of New Zealand](#) (MCNZ)

Although the ability to apply is not linked to postgraduate year (PGY) level, it is expected that the earliest point at which you may be able to apply to enter the RACS SET program is during your third postgraduate year (PGY3) after university so that you are able to achieve the prerequisites for the individual surgical specialty you apply to.

If your application to enter the SET program is successful, you will train in one of the nine surgical specialties. This training occurs primarily in public hospitals and usually takes between four and seven years, depending on the specialty.

Upon successful completion of all the SET program requirements, you can then apply to become a Fellow of the Royal Australasian College of Surgeons (FRACS) and will be accredited to practise independently as a consultant surgeon.

## Indigenous Health Committee

Indigenous people are under-represented in the health workforce of Australia and New Zealand. To meet the needs of all Australian and New Zealand communities, the surgical workforce needs greater representation from Aboriginal, Torres Strait Islander and Māori peoples.

RACS' Aboriginal and Torres Strait Islander Surgical Trainee Selection Initiative is designed to address the low participation of Aboriginal and Torres Strait Islander doctors in the surgical specialties. Individual Specialty Training Boards may implement a selection initiative to expand opportunities for Aboriginal and Torres Strait Islanders to enter training. Specialties may provide for setting aside posts for applicants who in the registration process identify as Aboriginal and Torres Strait Islander, and meet the eligibility requirements for membership of Australian Indigenous Doctors' Association (AIDA). To be eligible to be appointed, applicants must meet the minimum standards for appointment as defined by the Specialty Training Board.

RACS also offers an Indigenous Scholarship Program to support medical graduates who identify as Aboriginal, Torres Strait Islander or Māori, on their chosen career path to becoming a Surgeon.

The Indigenous Health Committee is working with the [Australian Indigenous Doctors' Association](#) (AIDA) and the [Māori Medical Practitioners Association of Aotearoa](#) (Te ORA) to promote surgery as a career to Indigenous doctors. For more information about RACS Closing the Gap initiatives, refer to the activities of the [Indigenous Health Committee](#) on the RACS website. See [Contacts](#) for more information.

## JDocs by RACS

RACS has developed the Junior Doctors (JDocs) Framework and ePortfolio to progressively guide junior doctors through the required skills, knowledge and behaviours to achieve and demonstrate the postgraduate year level. Engagement with JDocs will assist in your development towards a career in surgery. The JDocs ePortfolio gives you access to:

- Select RACS library resources
- eLearning modules relevant to junior doctors
- Generic Surgical Science Examination (GSSE) resources
- Online surgical skills logbook (MALT) and Key Clinical Tasks
- A platform to progressively assemble evidence of your achievements, work-based assessments and experiences, which can help support application to proceduralist specialty training.

Visit [JDocs](#) or contact [jdocs@surgeons.org](mailto:jdocs@surgeons.org) for further information.

## Essential Surgical Skills

RACS has produced a [Guide to Essential Surgical Skills](#), recommending the surgical skills to achieve before applying for the SET program.

This guide is useful for:

- medical students and pre-vocational doctors – to build a portfolio in preparation for application to the SET program
- hospital supervisors – to assist in providing relevant clinical experiences for residents intending to apply for the SET program
- educators – to assist in developing learning resources relevant to SET.

The JDocs website contains a selection of free [surgical skills videos](#) that are used in the RACS Australian and New Zealand Surgical Skills Education and Training (ASSET) course. The videos demonstrate instrument handling, standard precautions, suturing, knot tying and incisions / excisions. You have the option to purchase an essential [surgical skills kit](#) to enable practice of the skills demonstrated in the videos.

## RACS Trainees' Association (RACSTA)

RACSTA is comprised of all RACS Trainees and membership is automatic upon registration with the SET program. RACSTA exists to represent Trainees' interests within RACS and is here to improve surgical education and training, and make the Trainee journey as enjoyable, productive and supported as possible.

The RACSTA Committee consists of elected trainee representatives from all surgical specialties and represents trainees at all levels, from State/Territory Committees and National Boards. There are six executive members; posts include those elected to the Education, Training Environment, Support and Advocacy, and Communications portfolios. There are also 13 specialty representatives elected by the respective training boards, eight regional representatives elected by RACSTA and co-opted on the State/Territory/New Zealand National Committee and up to three co-opted members.

RACSTA supports Trainees by:

- Advocating on matters affecting Trainees.
- Conducting a survey at the end of each term to assess the quality of surgical education
- Holding an induction event every year to welcome new Trainees

Find out more about RACSTA visit the [RACS webpage](#) or [contact](#) the Executive Officer.



# RACS Values and Ten Competencies



## Values

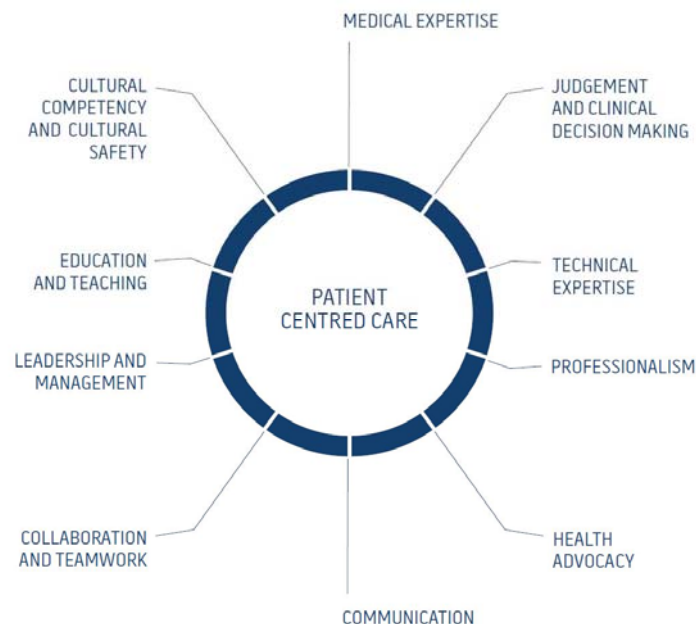
The values at RACS are the strong beliefs of our organisation.

They describe the way in which our Fellows, Trainees and staff behave, interact and work together and determine the culture of the College.

Our values are held in high regard by everyone within the organisation.

## Competencies and Training Standards

The SET program is underpinned by ten RACS competencies.



On the SET program, you will be expected to progress during training against each of the competencies. Further details on the [RACS competencies](#) are available on the RACS website and in the [Becoming a Competent and Proficient Surgeon](#) booklet.







# **SET Selection**

---

# SET Selection

## Stages of Selection (2022)

Selection into SET is a competitive process that occurs annually in stages:



Each Specialty Training Board accredits hospital training posts that enable their Trainees to acquire the competencies needed to become consultant surgeons who can practice both independently and as part of a multidisciplinary team. Every year, each Specialty Training Board allocates their Trainees to accredited hospital training posts which align with their training needs.

The number of new Trainees who receive offers each year for a specialty depends upon both:

- the number of available accredited hospital posts, and
- the number of applicants who meet the required selection standards.

**IMPORTANT:** You must stick to the timelines and submit both your registration to the SET program and, if eligible, your application by the published date. **Late applications will not be accepted.**



---

# Selection Registration

## Online Registration Form

You must register online via the RACS website (on the [Applying for the 2022 SET intake](#) webpage) if you wish to apply for the SET program. No registrations will be accepted after the closing date.

The Online Registration Form captures information and evidence against the generic eligibility requirements to apply for the SET program.

After registering, if you meet the generic eligibility requirements, you are invited to apply for the SET program.

## Registration for Specialties with Australia and New Zealand

There is no limit to the number of specialties that you may apply to. If you intend to apply to more than one specialty, you must indicate the specialties on the registration form and ensure you meet all relevant specialty-specific eligibility requirements.

**IMPORTANT:** The following specialties (in the below table) have separate selection processes in Australia and New Zealand. You can only apply for selection in **one country**. You must choose which country you wish to apply for, and you must nominate this at the time of registration. Please check your selection is correct - **you will not be able to change your selection**.

Australia	New Zealand
General Surgery Australia	General Surgery New Zealand
Plastic and Reconstructive Surgery Australia	Plastic and Reconstructive Surgery New Zealand
Orthopaedic Surgery Australia	Orthopaedic Surgery New Zealand
Otolaryngology Head and Neck Surgery Australia	Otolaryngology Head and Neck Surgery New Zealand

See [Appendix 3.1](#) for further details.

## Eligibility Requirements

Any person registering to apply for the SET program must:

1. fulfil all of the **generic** eligibility criteria **at the time of registration**, and
2. If successful, be prepared to meet the [eligibility criteria for the specific specialty](#) (or specialties) during the next stage of selection.

Generic Eligibility criteria	
<b>You must have permanent residency or citizenship of Australia or New Zealand at the time of registration</b>	Permanent (non-citizen) residents of New Zealand are not automatically entitled to residential approval in Australia. If you are a non-citizen New Zealand resident and you apply for a program with Australian rotations, <b><i>you will be responsible for securing a visa</i></b>
	<p>In the event that a visa cannot be obtained no special arrangements can be made, and the offer of a place on the program may be withdrawn, or the trainee dismissed</p> <p>From 1 October 2019, if you hold an Australian permanent resident visa, you will need to hold an NZeTA (New Zealand Electronic Travel Authority) prior to travelling to New Zealand. Australian passport holders are not required to have a NZeTA</p>
<b>You must have general (unconditional) registration in Australia or general scope or restricted general scope registration in the relevant specialty in New Zealand</b>	Doctors with restricted general scope registration can only apply for training in the specialty to which they are restricted
<b>You must have completed the RACS specified Hand Hygiene Learning Module from the National Hand Hygiene Initiative</b> <a href="#">(see Appendix 1.1)</a>	Your certificate must be for the RACS module  The module must have been completed since 1 January 2013. Your certificate must reflect this otherwise you will be asked to complete it again to ensure recency of skills
<b>You must have completed the RACS Operating with Respect eModule</b> <a href="#">(see Appendix 1.1)</a>	You can find the link for this course on the <a href="#">eLearning for Trainees webpage</a> .
<b>You must have passed the RACS <a href="#">Generic Surgical Sciences Exam (GSSE)</a></b> <a href="#">(see Examinations and Appendix 2.1)</a>	All specialties require SET applicants to have passed the RACS <a href="#">Generic Surgical Sciences Exam (GSSE)</a> either at the time of registration or by the close of SET applications. Refer to the relevant specialty selection regulations for confirmation of the deadline to meet this requirement.  Refer to the <a href="#">Registration for Selection into SET Policy</a> available on the RACS website for more details.

For a complete checklist of requirements, see [Appendix 4.1](#).

## Criminal Checks

At the time of registration applicants must consent to a full criminal history check and submit the necessary documentation on request to enable this to be undertaken.

## Former Trainees Seeking to Re-apply to SET

If you have previously withdrawn or been dismissed from the SET program and wish to re-apply, you must have appropriate permission to do so from the RACS Censor in Chief (CIC). Permission to re-apply is determined in accordance with the RACS Policy on [Former Trainees Seeking to Reapply to Surgical Training](#) on the RACS website.

Your application for permission to re-apply must be received no later than the first working day of November each year. Applications submitted after this date will not be considered until the following year.

If you receive permission from the RACS CIC to re-apply, you must include evidence of this with your registration. If this is not included, you will be deemed ineligible.

## Invitation to Apply

After registering, if you have been confirmed as satisfying the generic eligibility requirements, you may lodge an application for selection with the relevant specialty. **All applications must be made using the appropriate online form.**

The following specialties accept applications for selection through RACS:

- [Cardiothoracic Surgery](#)
- [Otolaryngology Head and Neck Surgery New Zealand](#)
- [Paediatric Surgery](#)
- [Plastic and Reconstructive Surgery New Zealand](#)

The following specialties accept applications for selection through their specialty societies:

- [General Surgery Australia](#)
- [General Surgery New Zealand](#)
- [Neurosurgery](#)
- [Orthopaedic Surgery Australia](#)
- [Orthopaedic Surgery New Zealand](#)
- [Otolaryngology Head and Neck Surgery Australia](#)
- [Plastic and Reconstructive Surgery Australia](#)
- [Urology](#)
- [Vascular Surgery](#)

## Registration and Application Fees

Registration for the SET program takes place each year. There is a non-refundable fee payable at the time of registration.

Each application for Selection for each specialty will incur a non-refundable fee. [Fees](#) for applications accepted through RACS are available on the RACS website. All other specialties will publish their own selection processing fees.

You can find the fees and further information by visiting the specialty selection webpages, listed in [Appendix 3.1](#).

---

# Application to the SET Program

## Selection Instruments

In 1998 RACS endorsed the *Best Practice Framework for Trainee Selection* that subsequently became known as the [Brennan Principles](#). Each of the nine surgical specialties administers its own selection processes. A range of selection tools are used. The weighting of these tools must be reasonable and fair to all applicants. These weightings are determined prior to the commencement of the selection process and published in all specialty selection regulations.

To improve the quality and effectiveness of the SET selection process, RACS conducts research and evaluates the performance of selection instruments and processes. Research and evaluation may include 'pilot' implementation of selection instruments or processes to study their utility in the RACS context. Applicants to SET may be invited to participate in selection research or evaluation.

## Online Application Form

Irrespective of which specialty you're applying for, you must provide:

- contact details for referees
- evidence to show that you meet the minimum eligibility criteria
- a structured Curriculum Vitae (CV) which captures information and evidence of:
  - surgical experience
  - other qualifications
  - publications and presentations
  - skills courses
  - medical achievements
  - leadership exposure

**IMPORTANT:** All applicants should read the current selection regulations and ensure that they meet the minimum eligibility requirements for each specialty they apply to.

Refer to the [Selection to Surgical Education and Training](#) policy on the RACS website for more details.

## Situational Judgement Test

The 2021 selection process for the 2022 SET program intake includes a mandated pilot of a Situational Judgement Test.

After registration, if you are eligible to apply for the SET program, you will be required to take a mandated Situational Judgement Test on 30 April 2021. The test will be administered online using remote proctoring under secure test conditions and you will be able to sit the test from a location of your choice.

You will not be eligible to proceed further in the 2021 selection process if you do not take the mandated Situational Judgement Test. Exemptions will only be granted in exceptional circumstances, and at the discretion of the Specialty Training Board.

As a pilot, the results will be analysed to inform RACS of the tool's validity and utility in the selection context. **Data from the pilot SJT will not contribute to selection scores and will not be used to determine selection outcome during the 2021 selection process.**

The scores and rank for the Situational Judgement Test will not be provided to candidates.



## Generic Surgical Sciences Examination (GSSE)

By the close of applications into the SET Program, all potential candidates must pass the Generic Surgical Sciences Examination (GSSE). Please see the [Examinations](#) section for further information.

## Structured Referee Reports

You will be asked to name a number of Referees in your application form. Referees are then selected, and reports collected from them in accordance with the relevant specialty-specific regulations. Information collected in the referee reports include applicant clinical aptitude, workplace behaviour, and personal attributes.

## Interviews

Once the Referee Reporting stage has closed, CV and Referee Report scores are combined for each applicant. Those who achieve the minimum standard (this varies depending on the specialty) will then be invited to interview by the Specialty Training Board. You will be given at least 10 days' notice of the interview date.

## Announcement of Offers

Eligible applicants who satisfy the specialty selection application requirements will be classified as one of the below:

<b>Successful</b>	an eligible applicant who satisfied the minimum standards for selection and in the ranking of combined weighted scores of all applicants for the specialty, scored high enough to be made an offer
<b>Unsuccessful</b>	an eligible applicant who satisfied the minimum standards for selection but who did not rank high enough in comparison to other applicants to be made an offer
<b>Unsuitable</b>	an applicant who failed to satisfy a minimum standard for selection

Applicants offered a position on a training program must accept within the nominated timeframe or the offer will be automatically rescinded.

Feedback to applicants is provided in writing by the Specialty Training Boards on completion of the relevant stage of the selection process.





# **The SET Program**

---

# The SET Program

Surgical Trainees work and train in hospitals under the supervision of experienced surgeons. The training year begins in January/February in Australia and New Zealand. The main components of SET training are:

- placements (or rotations) in hospital posts
- short courses – RACS run skills courses and specialty-specific courses
- research – each specialty has research requirements
- assessments – including work-based assessments and generic and specialty-specific examinations

## Assessment Tools

SET Trainees are assessed through a combination of work-based assessments and examinations. Work-based assessments include Mid-Term and End of Term reports, Direct Observation of Procedural Skills (DOPS) reports, Mini Clinical Examination (Mini-CEX) reports and logbooks.

Individual SET Programs may have additional specialty-specific assessment tools and requirements which will be documented in the relevant training regulations and may also be listed on the RACS or Specialty Program website.

## In-training Evaluation

Supervision and assessment of Trainees by Surgical Supervisors is necessary to ensure quality of training, general progress, suitability to continue training, suitability to sit the Fellowship Examination and the completeness of training. During training, each Trainee will be the subject of regular in-training evaluation reports. The Surgical Supervisor and the Specialty Training Board are responsible for the in-training evaluation of SET Trainees.

Evaluation forms will not be considered valid unless signed by both the Trainee and the Supervisor responsible for their completion. Trainees are responsible for submission of forms and for maintaining a copy for their own records.

## Logbooks

Trainees are required to keep a record of work undertaken in an official logbook to record their clinical experience over time. Logbooks can be used to audit the performance of the Trainee and the unit in which they work.

The format of the operative logbook is specific to each specialty.

To assist in compiling the logbook, the Trainee is advised to keep a notebook to record the management of each patient in which the Trainee plays a role and entries are to be made concurrently with hospital management. The notebook information can then be used to compile the logbook at leisure.

Logbooks provide information on operation statistics and outcome of surgery. For recording purposes, several categories are listed so that a Trainee may indicate their actual level of involvement.

The Surgical Supervisor and Specialty Training Board review logbooks at regular intervals.

## Mini-CEX

The Mini Clinical Examination (Mini-CEX) is designed to assess competencies essential to the provision of good clinical care. It is also used to facilitate feedback in order to drive learning. The mini-CEX involves an assessor observing the Trainee interacting with a patient in an unrehearsed clinical encounter in the workplace.

The assessor's evaluation is recorded on a structured checklist which enables the assessor to provide verbal developmental feedback to the Trainee immediately after the event. These assessments are formative and are aimed at guiding further development of clinical skills.

### Surgical DOPS

Direct Observation of Procedural Skills in surgery (Surgical DOPS) is a method of assessing competence in performing diagnostic and interventional procedures during surgical practice. It also facilitates feedback in order to drive learning.

An assessor will observe the Trainee performing an operative procedure within the workplace. The assessor's evaluation is recorded on a structured checklist which enables the assessor to provide verbal developmental feedback to the Trainee immediately after the procedure.

### SET Trainee Registration and Variation

It is recognised that some Trainees may have a need to defer, interrupt or undertake a period of part-time training at some point during their time in the SET Program. The following is an overview of the mechanisms by which Trainees may apply for variations to their registration status to undertake periods of deferment, interruption or part-time training.

Further details can be found in the RACS Trainee Registration and Variation Policy available on the RACS website under [Surgical Education and Training \(SET\) Policies](#).

#### Deferral, Interruption & Part-Time Training

Decisions to grant applications for deferral, interruption or part-time training are made by the relevant Specialty Training Board in accordance with specialty regulations. These decisions take into account:

- the reasons for the request
- the Trainee's progress to date, and
- logistical considerations

#### Parental Leave Entitlements

RACS has worked closely with the RACSTA Committee on portability of leave entitlements for Trainees with the aim to establish agreements from all Australian states, territories, and New Zealand to support reciprocal leave entitlements consistent with the Public Service Act.

The progress as of June 2020 is as follows:

- ACT, SA, NSW, QLD provide for a gender specific entitlement (maternity leave for the mother only) while NT, TAS, VIC, WA offer the entitlement to the 'primary care giver'.
- Specific entitlements that ensure no parental leave disadvantage for a Trainee returning to their home jurisdiction having moved because of learned medical college requirements now exists in NSW, NT, QLD, SA, TAS, VIC and WA
- Specific entitlement to ensure no parental leave disadvantage for a Trainee arriving at one jurisdiction, for the first time, from another jurisdiction (for any reason) now exists in ACT, QLD, SA, VIC and WA.

#### Flexible Training

RACS supports flexible surgical training. It increases diversity in the surgical workforce by increasing the appeal of surgical training to more candidates and enables Trainees to broaden their focus and pursue wider interests while training.

Flexible training refers to less than full time training and may be of interest to all Trainees, regardless of gender. Increasing numbers of surgical Trainees in Australia and New Zealand are benefiting from training in a flexible manner.

For more information refer to the RACS [website](#) or download the [Flexible Training Toolkit](#).



## Research

All surgical Trainees undertake one or more research projects during SET. Research is strongly encouraged by RACS and some Specialty Training Boards specify that a research requirement is completed as part of the SET program.

The research requirement may include (but is not limited to):

- presentation of a paper/poster display to a meeting for which abstracts are subject to review and selection
- a dissertation with a written review of a clinical problem, together with a critical literature review
- a publication in a journal which referees all manuscripts
- a period of full-time research
- a research higher degree at Masters level or above

## Recognition of Prior Learning (RPL)

It is recognised that Trainees entering SET may have gained prior medical training or experience which is comparable to components of the SET program in terms of learning outcomes, competency outcomes and standards.

The RACS [Recognition of Prior Learning Policy](#) is available on the RACS Website under [Surgical Education and Training \(SET\) Policies](#). Some Specialty Training Boards may recognise prior learning and details for individual programs can be found in their specialty regulations.

**Note:** recognition of prior learning is available only for the specific components identified within the policy.

## Health and Wellbeing (RACS Support Program)

As surgeons, our profession is focused on improving the health of others, but this can sometimes come at the cost of looking after our own. Being healthy means more than just the absence of ill-health. It encompasses our mental, physical and social wellbeing and it enables us to practice effectively throughout our career.

RACS is committed to supporting the wellbeing of surgical trainees and offers a variety of wellbeing programs that address:

- emotional stress
- interpersonal conflict
- mental health concerns
- changes to your work environment
- bullying and harassment
- grief and bereavement
- family relationships
- personal crisis or trauma

You can read more about the RACS Support Program on the [website](#).

---

## Skills Courses

Surgical trainees are required to complete a number of skills courses generic to all specialties

The skills courses mandated within SET provide an opportunity for Trainees to learn and practice skills in the surgical competencies and are taught by an expert faculty. Some skills courses include pre-course reading, assessment and online learning.

An overview of the most commonly required skills courses is provided below.

They are:

- **ASSET**
- **CCrISP®**
- **CLEAR**
- **EMST**
- **TIPS**

Some specialties may specify additional courses that must be completed during various stages of the SET Program. Further information is contained in each specialty's Regulations.

### **ASSET Course: Australian and New Zealand Surgical Skills Education and Training**

ASSET is a practical two-day course teaching surgical skills. Taught by experienced surgeons, attendees benefit from high teacher to student ratios in an intensive, hands on environment.

The course is delivered in two sections. The first section includes ten eLearning modules that are required to be completed prior to the course followed by the classroom component which includes four modules undertaken over two days.

By completing the ASSET course, participants will be able to:

- Demonstrate integration of incision, tissue handling, instrument, suture and needle selection, and suturing/tying skills
- Practice standard precautions
- Safely practice electrosurgery
- Demonstrate traumatic wound assessment and management skills
- Demonstrate simple bone manipulation techniques
- Display competence in a variety of basic practical skills relating to different endoscopic environments and the mechanics of instrumentation.

The emphasis of this course is on small group teaching, intensive hands-on practice of basic skills, individual tuition, personal feedback to participants and the performance of practical procedures.

The ASSET course is not assessed; trainees are given direct observational feedback throughout the course.

### **CCrISP® Course: Care of the Critically Ill Surgical Patient**

CCrISP® teaches doctors to adopt a structured and comprehensive approach to managing surgical patients, to recognise the deteriorating patient and determine which patients are most at risk.

By completing this course, you will be able to:

- adopt a structured, comprehensive approach to managing surgical patients
- judge which patients are at most risk and plan to reduce their risk of adverse outcomes
- recognise the deteriorating patient and intervene to correct the problem
- acknowledge the importance of communication in managing surgical patients.

The course runs over two and a half days, and the program includes demonstrations, interactive lectures, practical skill stations and clinical case scenarios.

CCrISP® is an assessed course. Course assessment includes continual subjective assessment of participant's core knowledge, clinical insight, enthusiasm and assessment of the final day patient management scenario.

### **CLEAR Course: Critical Literature Evaluation and Research**

CLEAR provides participants with core knowledge and skills needed for critical appraisal of medical literature, and tools for understanding, designing and implementing surgical research.

The CLEAR Course is mandatory for General Surgery, Neurosurgery, Orthopaedic Surgery (New Zealand only) and Urology SET Trainees.

CLEAR comprises of a mandatory pre-course eLearning component and a two-day face-to-face component consisting of lectures and small group teachings.

By completing CLEAR, you will be able to:

- Ask answerable clinical questions
- Find and critically appraise literature efficiently
- Understand study methodologies
- Extract numerical information from literature
- Apply evidence to surgical practice
- Develop sound foundations for conducting research
- Incorporate current research into practice
- Identify areas where good evidence is lacking and future research necessary

The CLEAR course is not formally assessed.



### **EMST Course: Early Management of Severe Trauma**

EMST teaches a systematic, concise approach to the care of a trauma patient, providing a safe and reliable method for immediate management of injured patients in the first one to two hours following injury. Adapted from the Advanced Trauma Life Support (ATLS®) course of the American College of Surgeons the course emphasis is on life saving skills and systematic clinical approach.

After completing the EMST course, a participant will be able to:

- Demonstrate the concepts and principles of primary and secondary patient assessment;
- Establish management priorities in the initial management of a trauma patient;
- Initiate primary and secondary management of a simulated trauma patient in a timely manner;
- In a given trauma situation, demonstrate skills that are often required in the initial assessment and treatment of patients with multiple injuries.

The course runs over two and a half days, and the program includes interactive discussions, practical skill stations, case scenarios.

EMST is an assessed course. Participants are required to attend and engage in each session of the course. Participants are assessed on both a written multiple-choice questionnaire and practical exam (initial assessment). Each component must be completed successfully in order to achieve EMST certification, which is valid for four years.

### **TIPS Course: Training in Professional Skills**

TIPS offers a unique opportunity to learn and practice professional skills relevant to surgery in a safe and supportive learning environment. TIPS is a two-day course focussing on patient-centred care and communicating in teams, recognising the direct impact enhanced communication has on patient outcomes.

The course is delivered through a combination of online learning modules, interactive lectures, small group activities, discussions and immersive simulation scenarios. Participants address issues and events that occur in the clinical and operating theatre environment that require skills in communication, teamwork, decision making, conflict resolution and leadership.

At the end of this course, participants should be able to:

- describe the benefits and challenges associated with effective patient-doctor communication in surgical practice
- describe the benefits and challenges associated with effective teamwork and collegial communication in surgical practice
- identify personal strengths and areas for improvement with respect to skills relevant to the above domains
- identify methods for practising and integrating these skills in the workplace
- reflect on achieving appropriate professional behaviours

The TIPS course is not formally assessed. Formative assessment throughout the course aims to improve participants' skills and connect the lessons with clinical applications.

---

# Examinations

## Generic Surgical Sciences Examination

By the close of applications into the SET Program, all potential candidates must pass the Generic Surgical Sciences Examination (GSSE). This exam is designed to ensure that candidates have demonstrated a minimum standard of knowledge in the surgical sciences of anatomy, pathology and physiology - the foundation of surgical training. Passing the GSSE requires demonstration of this 'minimum standard' of knowledge in each discipline as well as sound knowledge 'across the board'.

All specialties require SET applicants to have passed the RACS Generic Surgical Sciences Exam (GSSE) either at the time of registration or by the close of SET applications. Refer to the relevant specialty selection regulations for confirmation of the deadline to meet this requirement.

For further information, see [Appendix 3.1](#) for a list of Specialty Societies and [Appendix 4.1](#) for further information on the GSSE.

SET trainees' knowledge and skills are formally assessed by a number of examinations. Trainees are examined in both written and practical 'clinical' formats, and on both specialty-specific content, and generic topics to all surgical trainees.

During the course of their training, all SET trainees, unless otherwise indicated, must complete:

- Clinical Examination (CE)
- Specialty Specific Surgical Science Examination (SSE)
  - The General Surgery SET program has specialty specific online modules in place of an examination
- Fellowship Examination (FEx)

Other assessments are conducted in the workplace. Each specialty has established time limits and eligibility requirements for the successful completion of the different components of the examination (refer to individual specialty training regulations).

## Clinical Examination

The Clinical Examination (CE) is a practical examination designed to assess early SET (preferably SET 1) trainees in the clinical application of the basic sciences. The emphasis of the Clinical Examination is on the application of basic science knowledge and understanding and clinical practise relevant to all forms of surgery. Trainees spend five minutes at each of 16 assessed stations. Examples of tasks include patient history taking and examination, demonstration of practical technical skill, the application of basic science knowledge, data acquisition and analysis, counselling and communication skills.

This examination must be passed within the first two years of active training and trainees are permitted a maximum of four attempts. All Cardiothoracic, Paediatric, Plastic & Reconstructive Surgery, Urology and Vascular Surgery SET Trainees, must successfully complete the Clinical Examination.

Refer to the [Conduct of SET Clinical Examination Policy](#) on the RACS website.

**IMPORTANT:** Please note that for the 2023 SET intake, the Clinical Examination will transition to a selection prerequisite for some specialties. More details will be released closer to the time.

### Specialty Specific Surgical Science Examination

The Specialty Training Board will determine which Specialty Specific examination (SSE) a trainee must undertake and in what timeframe. The SSE must be completed in accordance with each Specialty's requirements:

- Cardiothoracic Surgery – Cardiothoracic Surgical Sciences and Principles ([CSSP](#))
- Orthopaedic Surgery - Orthopaedic Principles and Basic Science Examination ([OPBS](#))
- Paediatric Surgery – Paediatric Anatomy & Embryology ([PAE](#)) Examination and the Paediatric Pathophysiology ([PPP](#)) Examination.
- Plastic & Reconstructive Surgery - Plastic and Reconstructive Surgical Sciences and Principles Examination ([PRSSP](#))
- [OHN Surgery](#), [Urology](#) and [Vascular Surgery](#) – Surgical Science Specialty Specific (SSE) Examination

Refer to the relevant [Conduct of SSE Examination Policy](#) on the RACS website.

### Fellowship Examination

The Fellowship Examination (FEx) comprises a written component and a clinical/viva component. These are made up of seven segments in total, which for most specialties is divided into two written papers and five clinical/viva segments.

The Fellowship Examination assesses the knowledge, clinical skills, judgment and decision-making and professional competencies of candidates, in order to ensure that they are safe and competent to practice as surgeons. The examination is blueprinted to the specialty curriculum, and examiners use agreed marking guidelines to assess against the required standard.

The Specialty Court of Examiners determines the content of their examination and candidates are advised as to the components of the examination unique to their Specialty. Any changes to the format of the Fellowship Examination are forwarded to trainees no less than six months prior to an examination.

To sit the Fellowship Examination, a trainee must:

1. Be registered as an accredited Trainee of the College
2. Have satisfied the specialty specific requirements of training by the [Specialty Training Board](#).

The Specialty Training Boards determine the surgical training program that must be completed by a trainee. Each Specialty Training Board determines the elements of the training program that must be completed before a trainee is eligible to apply and present for the Fellowship Examination.

A trainee who is assessed by their Specialty Training Board as having satisfactorily completed all requirements and is adequately prepared will be approved to present for the examination.

A letter of support from the applicant's current supervisor of training and/or Director of Training and Regional Training Committee Chair (for AOA only) must be submitted directly to the Trainee's relevant Specialty Training Board if required.

An application outside the published timeframes will not be accepted.

Refer to the [Conduct of the Fellowship Examination Policy](#) available on the RACS website.

Please note that completion of the Fellowship Examination does not automatically provide a trainee with a FRACS. Trainees who have successfully completed the Fellowship Examination may apply for Fellowship. Refer to the [Admission to Fellowship Policy](#) on the RACS website.

Please note: this information was correct at time of publication. In case of further updates, please refer to the RACS website.







# **Surgical Specialties**

---

## Surgical Specialties

### Trainees selected into SET Program in 2019 (commencing in 2020)

(includes deferred offers)

SURGICAL SPECIALTY	# Applications	# Trainees
Cardiothoracic Surgery	48	13
General Surgery (Australia)	265	103
General Surgery (New Zealand)	48	17
Neurosurgery	67	10
Orthopaedic Surgery (Australia)	59	59
Orthopaedic Surgery (New Zealand)	15	15
Otolaryngology Head & Neck Surgery (Australia)	78	12
Otolaryngology Head & Neck Surgery (New Zealand)	15	3
Paediatric Surgery	0	0
Plastic & Reconstructive Surgery (Australia)	71	14
Plastic & Reconstructive Surgery (New Zealand)	15	4
Urology	66	20
Vascular Surgery	42	10

The following pages include tables for each surgical specialty which summarise the training program requirements for each SET level. In addition to these requirements, there will be continuous assessment of your clinical rotations. All training program requirements must be successfully completed by the level in which there is a tick in the corresponding column.

Failure to complete a requirement by this time may lead to a Trainee not progressing in the SET program.

Further details regarding the Specialty Societies can be found in [Appendix 3.1](#).

## Cardiothoracic Surgery

Cardiothoracic Surgery is the medical specialty devoted to the surgical management of intrathoracic diseases and abnormalities. The Cardiothoracic surgeon may perform surgical procedures that involve the lung, heart, and/or the great vessels. The SET Program in Cardiothoracic Surgery is designed to provide trainees with clinical and operative experience, to enable them to manage both cardiac and thoracic conditions that relate to the specialty, including becoming familiar with the techniques related to the discipline.

### Duration

The SET Program in Cardiothoracic Surgery is structured over a six year sequential curriculum as follows:

**SET 1-6** Satisfactory completion of 12, six-month terms and six years of satisfactory operative experience in Cardiothoracic Surgery training

### Training Requirements

	SET 1	SET 2	SET 3	SET 4	SET 5	SET 6
<b>SURGICAL ROTATIONS</b>						
Cardiothoracic Surgery Training	✓	✓	✓	✓	✓	✓
<b>ASSESSMENT</b>						
Supervisor's Report	✓	✓	✓	✓	✓	✓
MALT Electronic Logbook	✓	✓	✓	✓	✓	✓
DOPS	✓	✓	✓	✓	✓	✓
Longitudinal Requirement Form	✓	✓	✓	✓	✓	✓
Self-Evaluation	✓					
Rotation Evaluation	✓					
360 Degree Evaluation Survey	✓					
Thesis Requirement	✓	✓	✓	✓		
2 Publications	✓	✓	✓	✓	✓	✓
<b>EXAMINATIONS</b>						
Surgical Sciences and Principles (CSSP)		✓	✓	✓		
Clinical Examination	✓	✓				
Fellowship Examination					✓	✓
<b>COURSES</b>						
ASSET Course	✓					
CCrISP® Course	✓					
EMST Course	✓	✓				
Cardiothoracic Course	✓	✓	✓	✓	✓	✓
<b>MEETINGS</b>						
ANZSCTS Meeting	✓	✓	✓	✓	✓	✓
ANZSCTS ASM Trainee wetlab	✓	✓	✓	✓	✓	✓

For further information, please refer to the most recent Training Regulations found [here](#).

## General Surgery Australia

General Surgery is the core specialty within the discipline of surgery and is the broadest of the surgical specialties. The General Surgeon is a surgical specialist engaged in the comprehensive care of surgical patients and in some situations the General Surgeon may require knowledge of the whole field of surgery. The General Surgeon is frequently the one first confronted with the acutely ill or injured person and is responsible for the early investigation of the obscure surgical illness.

The General Surgery SET Program in Australia is administered by [General Surgeons Australia](#) (GSA).

### Duration

The SET Program in General Surgery in Australia is structured over four years as follows:

**SET 2-5** satisfactory completion of 8 x six-month terms in posts accredited by the Australian Board in General Surgery (AUBiGS) beyond SET 2.

### Training Requirements

	SET1	SET2	SET3	SET4	SET5
<b>SURGICAL ROTATIONS</b>					
General Surgery Training		✓	✓	✓	✓
<b>ASSESSMENT</b>					
In Training Assessment Forms		✓	✓	✓	✓
Logbook		✓	✓	✓	✓
Research Requirement <sup>1</sup>			✓		
<b>SEAM (SURGICAL EDUCATION AND ASSESSMENT MODULES)</b>					
Content and Assessment Modules		✓	✓		
<b>EXAMINATIONS<sup>2</sup></b>					
Fellowship Examination					✓
<b>COURSES<sup>3</sup></b>					
ASSET Course		✓			
CCrISP® Course		✓			
CLEAR Course					✓
EMST Course <sup>4</sup>		✓			
<b>EDUCATIONAL SESSIONS<sup>5</sup></b>					
GSA Trainees' Days (AU)		✓	✓	✓	✓

1. The Research Requirement must be completed prior to being awarded Fellowship of the Royal Australasian College of Surgeons.
2. Trainees commencing from 2019 onwards are no longer required to complete the Clinical Examination.
3. Courses are listed at the latest SET level they must be completed in order to progress through SET. Courses may be undertaken prior to the SET level indicated.
4. EMST Course requirement changed from SET5 to SET2 for trainees commencing in 2019.
5. Trainees commencing from 2011 onwards must attend at least four GSA Trainees' Days over the course of their training.



## General Surgery New Zealand

General Surgery is the core specialty within the discipline of surgery and is the broadest of the surgical specialties. The General Surgeon is a surgical specialist engaged in the comprehensive care of surgical patients and in some situations the General Surgeon may require knowledge of the whole field of surgery. The General Surgeon is frequently the one first confronted with the acutely ill or injured person and is responsible for the early investigation of the obscure surgical illness.

The General Surgery SET Program in New Zealand is administered New Zealand Association of General Surgeons.

### Duration

The SET Program in General Surgery in New Zealand is structured over four years as follows:

**SET 2-5** satisfactory completion of 8x six-month terms in posts accredited by the New Zealand Board in General Surgery (NZBiGS) beyond SET 2.

### Training Requirements

	SET1	SET2	SET3	SET4	SET5
<b>SURGICAL ROTATIONS</b>					
General Surgery Training		✓	✓	✓	✓
<b>ASSESSMENT</b>					
In Training Assessment Forms		✓	✓	✓	✓
Logbook		✓	✓	✓	✓
Research Requirement <sup>1</sup>					✓
<b>SEAM (SURGICAL EDUCATION AND ASSESSMENT MODULES)</b>					
Content and Assessment Modules		✓	✓		
<b>EXAMINATIONS<sup>2</sup></b>					
Fellowship Examination					✓
<b>COURSES<sup>3</sup></b>					
ASSET Course		✓			
CCrISP® Course		✓			
CLEAR Course					✓
EMST Course					✓
<b>EDUCATIONAL SESSIONS<sup>4</sup></b>					
NZAGS Trainee Days		✓	✓	✓	✓

1. The Research Requirement must be completed prior to being awarded Fellowship of the Royal Australasian College of Surgeons.
2. Trainees commencing from 2019 onwards are no longer required to complete the Clinical Examination.
3. Courses are listed at the latest SET level they must be completed in order to progress through SET. Courses may be undertaken prior to the SET level indicated.
4. Trainees commencing from 2011 onwards must attend at least four NZAGS Trainee Days over the course of their training.

## Neurosurgery

Neurosurgery provides for the operative and non-operative management of disorders that affect the central, peripheral and autonomic nervous system, including their supportive structures and vascular supply. This includes prevention, diagnosis, evaluation, treatment, critical care and rehabilitation as well as the operative and non-operative management of pain.

Neurosurgery encompasses disorders of the brain, meninges, skull and their blood supply including the extracranial carotid and vertebral arteries, disorders of the pituitary gland, disorders of the spinal cord, spinal cord meninges and spine, including cranial and peripheral nerves.

The SET program in Neurosurgery operates in Australia, New Zealand and Singapore, and is administered by the Neurosurgical Society of Australasia.

### Selection Process

All applicants will be allowed a maximum of four attempts at selection into the SET Program in Neurosurgery. The number of attempts will be counted starting from the 2022 intake onwards. At the time of the initial application, applicants must nominate a **Home Region** where, if selected, they will ordinarily spend the majority of their SET Program. The nominated Home Region cannot be changed in future selection applications unless a written request is made to the Board Chair prior to the closing date for applications and approved at the Board Chair's discretion on the grounds of exceptional circumstances.

In addition to the generic eligibility requirements for application to selection, applicants **with a Home Region in Australia** must at the time of application:

- have permanent residency or citizenship of Australia;
- have general (unconditional) registration in Australia;
- have completed a minimum 24 weeks' full-time equivalent dedicated neurosurgical experience in their Home Region in the three years immediately prior to application.

In addition to the generic eligibility requirements for application to selection, applicants **with a Home Region of New Zealand** must:

- have permanent residency or citizenship of New Zealand;
- have general scope registration or restricted general scope registration in neurosurgery in New Zealand;
- have completed a minimum 24 weeks' full-time equivalent dedicated neurosurgical experience in New Zealand in the three years immediately prior to application.

In addition to the generic eligibility requirements, applicants must have satisfactorily completed the RACS [Generic Surgical Sciences Examination](#) at the time of application.

Full details of the selection process can be found on the Neurosurgical Society of Australasia website at [www.nsa.org.au](http://www.nsa.org.au).

**Duration**

The SET Program in Neurosurgery is structured on a three level sequential curriculum to facilitate the cumulative acquisition of the experience, knowledge, skills and attributes aligned with the overall objective. The SET Program in Neurosurgery can be completed in a minimum of five years and a maximum of nine years subject to satisfactory progression through the levels in the timeframes.

**Training Requirements**

	<b>BASIC</b>	<b>INTERMEDIATE</b>	<b>ADVANCED</b>
<b>SURGICAL ROTATIONS</b>			
Neurosurgery Training	✓	✓	✓
<b>ASSESSMENT</b>			
Professional Performance Assessment	✓	✓	✓
Direct Observation of Procedural Skills Assessments	✓	✓	✓
Logbook	✓	✓	✓
Research Requirement		✓	
<b>EXAMINATIONS</b>			
Fellowship Examination			✓
<b>COURSES</b>			
CCrISP® Course	✓		
CLEAR Course		✓	
EMST Course		✓	
<b>MEETINGS</b>			
Neurosurgical Training Seminars	✓	✓	✓

## Orthopaedic Surgery Australia

Orthopaedic Surgery is a medical specialty that focuses on the diagnosis, care and treatment of patients with disorders of the bones, joints, muscles, ligaments, tendons, nerves and skin. These elements make up the musculoskeletal system. The physicians who specialise in this area are called Orthopaedic surgeons. Orthopaedic surgeons are involved in all aspects of health care pertaining to the musculoskeletal system. They use medical, physical and rehabilitative methods as well as surgery.

The SET Program in Orthopaedic Surgery is administered in Australia by the [Australian Orthopaedic Association](#) (AOA).

### Duration

The AOA 21 Training program in Orthopaedic Surgery is competency based, however there is a minimum duration of four years.

### Training Requirements

	Introduction to Orthopaedics (minimum of 12 months)	Core Orthopaedics (minimum of 24 months)	Transition to Practice (minimum of 12 months)
<b>SURGICAL ROTATIONS</b>			
Orthopaedic Surgery AU Training	✓	✓	✓
<b>ASSESSMENT</b>			
In Training Assessment Forms (Performance Appraisals, Progress Reviews, Workplace Based Assessments)	✓	✓	✓
Orthopaedic Modules	✓	✓	
Feedback Entries	✓	✓	✓
Electronic Logbook eLog)	✓	✓	✓
Research Requirement			✓
Bone School		✓	✓
<b>EXAMINATIONS – ONLY ONE SUCCESSFUL ATTEMPT IS REQUIRED</b>			
Orthopaedic Principles and Basic Science Surgery Examination (OPBS)	✓		
Fellowship Examination		✓	
<b>COURSES – ONLY ONE SUCCESSFUL ATTEMPT IS REQUIRED</b>			
Bone Camp	✓		
ASSET Course	✓		
CCrISP® Course	✓		
TiPS Course	✓		
EMST Course		✓	
AOA 21 Workshops			✓

## Orthopaedic Surgery New Zealand

Orthopaedic Surgery is a medical specialty that focuses on the diagnosis, care and treatment of patients with disorders of the bones, joints, muscles, ligaments, tendons, nerves and skin. These elements make up the musculoskeletal system. The physicians who specialise in this area are called Orthopaedic surgeons. Orthopaedic Surgeons are involved in all aspects of care pertaining to the musculoskeletal system.

The SET Program in Orthopaedic Surgery is administered in New Zealand by the [New Zealand Orthopaedic Association](#) (NZOA).

### Duration

The SET Program in Orthopaedic Surgery is structured over a five-year period of training.

### Training Requirements

	SET1	SET2	SET3	SET4	SET5
<b>SURGICAL ROTATIONS</b>					
Orthopaedic Surgery NZ Training	✓	✓	✓	✓	✓
<b>ASSESSMENT</b>					
In Training Assessment Forms (Quarterly Assessment Reports)	✓	✓	✓	✓	✓
In Training Assessment Forms (Quarterly Assessment Report End of Term)	✓	✓	✓	✓	✓
In Training Assessment Forms (Quarterly Assessment Report Mid Term)	✓	✓	✓	✓	✓
Electronic Logbook (eLog)	✓	✓	✓	✓	✓
Research Requirement	✓	✓	✓	✓	✓
Workplace Based Assessments	✓	✓	✓	✓	✓
Feedback Entries	✓	✓	✓	✓	✓
<b>EXAMINATIONS – ONLY ONE SUCCESSFUL ATTEMPT IS REQUIRED</b>					
Orthopaedic Principles and Basic Science Surgery Examination	✓	✓	✓		
Fellowship Examination					✓
<b>COURSES – ONLY ONE SUCCESSFUL ATTEMPT IS REQUIRED</b>					
ASSET Course	✓				
CCrISP® Course	✓				
CLEAR Course	✓	✓			
EMST Course	✓	✓	✓	✓	
TIPS			✓		

## Otolaryngology Head and Neck Surgery

Practitioners of otolaryngology head and neck surgery are specialist surgeons who investigate and treat conditions of the ear, nose, throat and neck.

The SET Program in Otolaryngology Head and Neck Surgery is administered in Australia by the [Australian Society of Otolaryngology Head & Neck Surgery \(ASOHNS\)](#), and in New Zealand conjointly by the [New Zealand Society of Otolaryngology, Head & Neck Surgery \(NZSOHNS\)](#) and the New Zealand office of the College.

### Duration

The SET Program in Otolaryngology Head and Neck Surgery is conducted over an average of five years and it includes compulsory six-month rotations in Paediatric and Head and Neck surgery.

### Training Requirements

	Novice	Intermediate	Competent
<b>SURGICAL ROTATIONS</b>			
Otolaryngology Head and Neck Surgery Training	✓	✓	✓
<b>PROCEDURES</b>			
60 x Temporal Bone Dissection Exercises		✓	
Tympanoplasty Audit		✓	
500 Type A & 500 Type B Procedures			✓
<b>ASSESSMENT</b>			
In Training Assessment Forms	✓	✓	✓
Logbook	✓	✓	✓
Research <b>Pre-Approval</b>		✓	✓
Research Completion			✓
CBDs		✓	✓
DOPS	✓		
Mini-CEX	✓	✓	
PBAs	✓	✓	✓
<b>EXAMINATIONS</b>			
Surgical Science Examination (SEE) in Otolaryngology	✓		
Fellowship Examination			✓
<b>COURSES</b>			
ASSET Course	✓		
CCrISP® Course	✓		
EMST Course	✓		
Functional Endoscopic Sinus Surgery (FESS) x2*	✓		✓
Head and Neck Course*			✓
Temporal Bone Course x2*	✓		✓
Online Temporal Bone Course x 2 trainees commencing 2021	✓		
<b>EDUCATIONAL MEETINGS</b>			
ASOHNS / NZSOHNS ASM / <b>Frontiers in Otolaryngology x 3</b>	✓	✓	✓
Registrar Annual Training Seminar (NZ) *	✓	✓	✓
Robert Guerin Annual Memorial Trainees Meeting (AU) *	✓	✓	✓*
Weekly Tutorials	✓	✓	✓

\*Unless sat and passed Fellowship Examination

## Paediatric Surgery

Paediatric Surgery is the specialty that includes surgeons who have specialist training in the management of children (usually up to the age of about 16 years) who have conditions that may require surgery. Specialist paediatric surgeons normally deal with non-cardiac thoracic surgery, general paediatric surgery and paediatric urology. Their responsibilities include involvement in the antenatal management of congenital structural abnormalities, neonatal surgery and oncological surgery for children.

### Early SET

Early SET will usually be completed in 2 years. Early SET is considered to be complete when compulsory courses, assessments, examinations and competencies identified in the curriculum are achieved. The first year of the program is structured as a provisional year with some additional assessments and specific supervision to ensure smooth transition into surgical training.

### Mid & Senior SET

Mid and Senior SET is considered to be complete when compulsory courses, assessments, examinations and competencies identified in the curriculum are achieved, usually over four (4) years.

### Duration

The SET Program in Paediatric Surgery is structured over a 7 year sequential curriculum as follows:

### Training Requirements

	EARLY SET	MID SET	SENIOR SET
<b>SURGICAL ROTATIONS</b>			
Paediatric Surgery Training	✓	✓	✓
<b>ASSESSMENT</b>			
In Training Assessment Forms	✓	✓	✓
Research Requirement	✓	✓	✓
MALT Logbooks	✓	✓	✓
Progressive Non-Operative Logbook	✓	✓	✓
DOPS	✓		
Mini-CEX	✓		
360 Degree Evaluation Survey	✓		
CATS		✓	✓
DOGS		✓	✓
MOUSE	✓	✓	✓
Mandatory Presentations (1 <sup>st</sup> year of SET)	✓		
<b>COURSES</b>			
TIPS Course	✓		
CCrISP® Course	✓		
EMST Course	✓		
APLS Course	✓		
EMSB Course	✓		
<b>EXAMINATIONS</b>			
Paediatric Anatomy & Embryology Examination	✓	✓	
Paediatric Pathophysiology Examination		✓	
Clinical Examination	✓		
Fellowship Examination			✓
<b>MEETINGS</b>			
Registrar Annual Training Seminar	✓	✓	✓

## Plastic and Reconstructive Surgery Australia

Plastic and Reconstructive Surgery is a wide-ranging specialty involving manipulation, repair and reconstruction of the skin, soft tissue and bone. Plastic surgery is a specialty not restricted to one organ or tissue type. The main emphasis is on maintaining or restoring form and function, often working in a team approach with other specialties.

The SET Plastic and Reconstructive Surgery Program is administered in Australia by the [Australian Society of Plastic Surgeons Inc.](#) (ASPS) and in New Zealand by the [New Zealand Association of Plastic Surgeons](#) (NZAPS).

Selection into Surgical Education and Training in Plastic and Reconstructive Surgery requires minimum ICU/emergency department experience, a pass grade in the Generic Surgical Sciences Examination, minimum surgical experience in surgery (any specialty), and in plastic surgery. One training position is reserved for Aboriginal and Torres Strait Islander applicants who satisfy a minimum standard.

### Duration

Trainees begin training in SET1 and are expected to complete at least five and no more than nine years of Surgical Education and Training in Plastic and Reconstructive Surgery in Australia. Flexible training (not less) is available from SET 2 onwards.

### Training Requirements

Training Requirements	SET 1	SET 2	SET 3	SET 4	SET 5
SURGICAL ROTATIONS					
Plastic and Reconstructive Surgery Training	✓	✓	✓	✓	✓
ASSESSMENT					
Logbook	✓	✓	✓	✓	✓
Research Requirement*					✓
Trainee Progress Review	✓	✓	✓	✓	✓
Workplace Based Assessments	✓	✓	✓	✓	✓
Entrustable Professional Activities	To be introduced as part of competency-based training				
EXAMINATIONS					
Clinical Examination (CE)**	✓	✓			
Plastic and Reconstructive Surgical Sciences and Principles Examination (PRSSPE)	✓	✓	✓	✓	
Practice Examination ***			✓	✓	✓
Fellowship Examination					✓
COURSES					
ASSET Course	✓				
CCrISP® Course	✓				
EMST Course****	✓				
Emergency Management of Severe Burns (EMSB)					✓
MEETINGS					
Registrars' Annual Training Seminar	✓	✓	✓	✓	✓

\* Research must be completed before the end of SET and can be undertaken at any time during SET. Annual research milestones are also required.

\*\* The Clinical Examination is a prerequisite for the PRSSP Examination. In 2022, the Clinical Examination will transition to a selection prerequisite.

\*\*\* Observing from late SET3. Participating from late SET 4.



## Plastic and Reconstructive Surgery New Zealand

Plastic and Reconstructive Surgery is a wide-ranging specialty involving manipulation, repair and reconstruction of the skin, soft tissue and bone. Plastic surgery is a specialty not restricted to one organ or tissue type. The main emphasis is on maintaining or restoring form and function, often working in a team approach with other specialties.

The SET Plastic and Reconstructive Surgery Program is administered in Australia by the [Australian Society of Plastic Surgeons Inc.](#) (ASPS) and in New Zealand by the [New Zealand Association of Plastic Surgeons](#) (NZAPS).

Selection into Surgical Education and Training in Plastic and Reconstructive Surgery in New Zealand requires a minimum 26 continuous weeks at Registrar level in a Plastic and Reconstructive Surgery rotation and 26 continuous weeks in any one of the following rotations completed prior to applying: General Surgery, Orthopaedic Surgery, Emergency Department, ICU or High Dependency. A pass grade in the Generic Surgical Sciences Examination is required prior to application. Applicants for SET Selection in 2022 (for the 2023 intake) will be required to have successfully completed the Clinical Exam prior to application.

### Duration

Trainees begin training in SET1 and are expected to complete at least five years and no more than nine years of Surgical Education and Training in Plastic and Reconstructive Surgery in New Zealand.

### Training Requirements

	SET 1	SET 2	SET 3	SET 4	SET 5
<b>SURGICAL ROTATIONS</b>					
Plastic and Reconstructive Surgery Training	✓	✓	✓	✓	✓
<b>ASSESSMENT</b>					
In Training Assessment Forms	✓	✓	✓	✓	✓
Logbook	✓	✓	✓	✓	✓
Research Requirement*	✓	✓	✓	✓	✓
Trainee Progress Review	✓	✓	✓	✓	✓
<b>BURNS ROTATION</b>					
Burns Rotation**					✓
<b>EXAMINATIONS</b>					
Clinical Examination	✓	✓			
Plastic and Reconstructive Surgical Sciences and Principles Examination (PRSSPE)	✓	✓	✓	✓	
Fellowship Examination					✓
<b>COURSES</b>					
ASSET Course	✓				
CCrISP® Course	✓				
EMST Course	✓				
Emergency Management of Severe Burns (EMSB)		✓			
TIPS Course	✓	✓	✓		
<b>PSEN Modules</b>					
Module 1	✓				
Modules 2-6		✓	✓		
Modules 7-8				✓	
<b>MEETINGS</b>					
Registrar Annual Training Seminar	✓	✓	✓	✓	✓

\* Research must be completed before the end of SET and can be undertaken at any time during SET. Annual research milestones are also required.

\*\* Burns rotation must be completed prior to the end of SET.

## Urology

### Specialty Information

Urology is the medical specialty dedicated to the treatment of men, women and children with problems involving the kidney, bladder, prostate and male reproductive organs. These conditions include cancer, stones, infection, incontinence, sexual dysfunction and pelvic floor problems. Urologists prescribe and administer medications and perform surgical procedures in the treatment of disease or injury. Urology is a challenging, innovative and technologically advanced surgical subspecialty.

The SET Urology program is administered by the [Urological Society of Australia and New Zealand](#) (USANZ).

### Duration

The SET Program in Urology is structured over a five year sequential curriculum as follows:

- nSET1** Foundations of Urology
- nSET2** Advanced Urological Training
- nSET3** Advanced Urological Training
- nSET4** Advanced Urological Training
- nSET5** Transition to Independent Practice

### Training Requirements

	nSET1	nSET2	nSET3	nSET4	nSET5
<b>SURGICAL ROTATIONS</b>					
Surgery in General (some Regions)	✓				
Urology Training	✓	✓	✓	✓	✓
<b>ASSESSMENT</b>					
In Training Assessment Forms	✓	✓	✓	✓	✓
Logbook	✓	✓	✓	✓	✓
Research Requirement*	✓	✓	✓	✓	
DOPS	✓	✓	✓		
Mini-CEX	✓	✓	✓		
<b>EXAMINATIONS</b>					
Surgical Science Examination (SSE) Urology	✓	✓	✓		
Clinical Examination	✓	✓			
Fellowship Examination				✓	✓
<b>COURSES</b>					
ASSET Course	✓				
CCrISP® Course	✓				
EMST Course	✓	✓			
CLEAR Course	✓	✓			
Induction Course	✓				
FSSE Course					✓
<b>MEETINGS</b>					
Trainee Week	✓	✓	✓	✓	
Regional Education Programs		✓**	✓**	✓**	
USANZ ASM	✓***	✓**	✓**	✓**	
USANZ Sections Meetings	✓***	✓**	✓**	✓**	

\* Must be completed before sitting Fellowship Examination

\*\* Required

\*\*\* Expected

## Vascular Surgery

Vascular Surgery is a specialty of surgery in which diseases of the vascular system, or arteries and veins, are managed by medical therapy, minimally-invasive catheter procedures and surgical reconstruction.

The SET Vascular Surgery Program is administered by the [Australian and New Zealand Society for Vascular Surgery](#) (ANZSVS).

### Duration

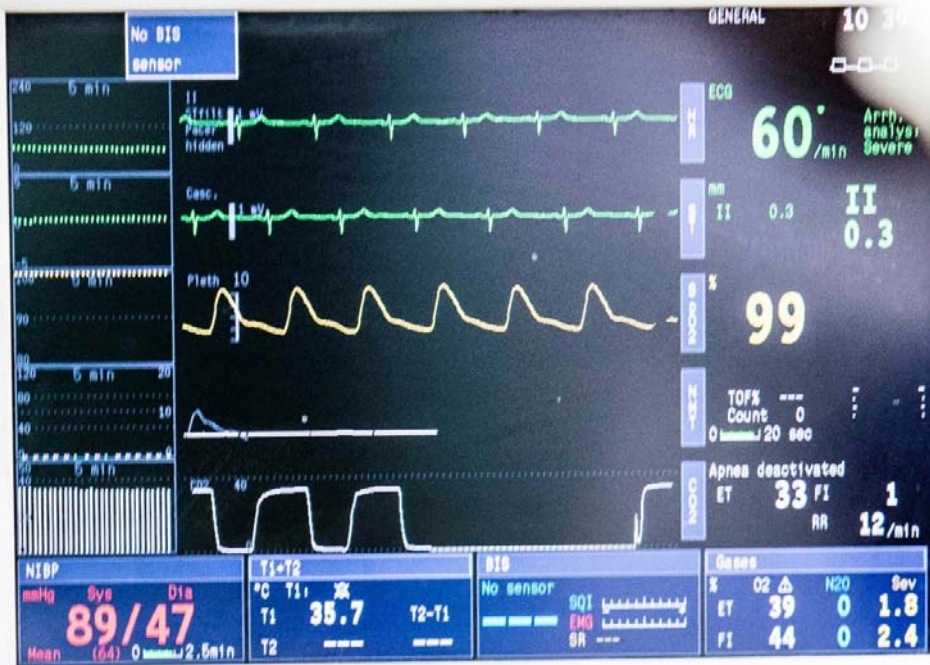
The SET Program in Vascular Surgery is structured over a five year sequential curriculum of speciality Vascular Surgery training in posts accredited by the Board of Vascular Surgery of the Royal Australasian College of Surgeons.

### Training Requirements

	SET 1	SET 2	SET 3	SET 4	SET 5
<b>SURGICAL ROTATIONS</b>					
Vascular Surgery Training	✓	✓	✓	✓	✓
<b>ASSESSMENT</b>					
In Training Assessment Forms	✓	✓	✓	✓	✓
Logbook	✓	✓	✓	✓	✓
Research Requirement	✓	✓	✓	✓	✓
DOPS	✓	✓	✓	✓	✓
Mini-CEX	✓	✓	✓	✓	✓
Trainee Tutorials	✓	✓	✓	✓	
360 Degree Evaluation Survey*					
<b>EXAMINATIONS</b>					
Surgical Sciences Examination (SSE) in Vascular Surgery		✓	✓		
Clinical Examination	✓	✓			
Fellowship Examination					✓
<b>COURSES</b>					
ASSET Course	✓				
CCrISP® Course	✓	✓			
EMST Course	✓	✓			
Trainee Skills Course	✓	✓	✓	✓	✓

\* The Board of Vascular Surgery has introduced a 360 degree assessment which will only be required if a trainee has an unsatisfactory rotation; it will also be available to supervisors if they have a satisfactory trainee but want to do a 360 degree assessment to broaden the trainee's awareness beyond technical skills.

**Datex-Ohmeda**



Buttons: **System Alarm**, **Help**, **Record Data**, **Records**, **Monitor Setup**, **Patient Data**, **ECG**, **NIBP**, **Invasive Pressures**, **Normal Screen**, **Pulse Oximetry**, **Airway Gas**, **Others**





**Contacts**

---

# Contacts

## Examinations Department

Royal Australasian College of Surgeons

**GSSE and Specialty Specific Examinations:** +61 3 9249 1244

**SSE Exam:** +61 3 9249 1244

**Clinical Exam:** +61 3 9249 1245

**Fellowship Exam:** +61 3 9249 1247

**E:** [examinations@surgeons.org](mailto:examinations@surgeons.org)

**W:** [www.surgeons.org](http://www.surgeons.org)

## Indigenous Health Committee

Royal Australasian College of Surgeons

**E:** [indigenoushealth@surgeons.org](mailto:indigenoushealth@surgeons.org)

**W:** [www.surgeons.org/about-racs/indigenous-health](http://www.surgeons.org/about-racs/indigenous-health)

Australian Indigenous Doctor's Association (AIDA)

**T:** +61 2 6273 5013

**T:** 1800 190 498 (Freecall)

**E:** [aida@aida.org.au](mailto:aida@aida.org.au)

**W:** [www.aida.org.au/studying-medicine/](http://www.aida.org.au/studying-medicine/)

Te Ohu Rata O Aotearoa/Māori Medical Practitioners Association (Te ORA)

**T:** +64 27 960 8744

**E:** [teora@teora.maori.nz](mailto:teora@teora.maori.nz)

**W:** <https://teora.maori.nz/>

## Pre-Vocational Coordinator (JDocs and ESS)

Royal Australasian College of Surgeons

**E:** [jdocs@surgeons.org](mailto:jdocs@surgeons.org)

**W:** [www.jdocs.surgeons.org](http://www.jdocs.surgeons.org)

## RACSTA Trainees' Association

Executive Officer

Royal Australasian College of Surgeons

**P:** +61 3 9249 1212

**E:** [racsta@surgeons.org](mailto:racsta@surgeons.org)

**W:** <https://www.surgeons.org/en/Trainees/trainee-association-racsta>

## Skills Courses Department

Royal Australasian College of Surgeons

**P:** +61 3 9276 7450

**E:** [skills.courses@surgeons.org](mailto:skills.courses@surgeons.org)

**W:** [www.surgeons.org](http://www.surgeons.org)

## Surgical Training Department

SET Program Coordinator

SET Selection Enquiries

**P:** +61 3 9249 1114

**E:** [SETEnquiries@surgeons.org](mailto:SETEnquiries@surgeons.org)

**W:** [www.surgeons.org](http://www.surgeons.org)



## **SPECIALTY SOCIETIES**

### **Cardiothoracic Surgery**

Executive Officer  
Royal Australasian College of Surgeons  
P: +61 3 9276 7418  
E: [cardiothoracic.board@surgeons.org](mailto:cardiothoracic.board@surgeons.org)  
W: [www.surgeons.org](http://www.surgeons.org)

### **General Surgery Australia**

Training and IMG Coordinator  
C/- General Surgeons Australia  
P: +61 3 9276 7472  
E: [selection@generalsurgeons.com.au](mailto:selection@generalsurgeons.com.au)  
W: [www.generalsurgeons.com.au](http://www.generalsurgeons.com.au)

### **General Surgery New Zealand**

Training Manager  
C/- New Zealand Association of  
General Surgeons  
P: +64 4 384 3355  
E: [helen@nzags.co.nz](mailto:helen@nzags.co.nz)  
W: [www.nzags.co.nz](http://www.nzags.co.nz)

### **Neurosurgery**

Education and Training Officer  
C/- Neurological Society of Australasia  
P: +61 3 9642 4699  
E: [set.neurosurgery@nsa.org.au](mailto:set.neurosurgery@nsa.org.au)  
W: [www.nsa.org.au](http://www.nsa.org.au)

### **Orthopaedic Surgery Australia**

Executive Officer  
C/- Australian Orthopaedic Association  
P: +61 2 8071 8000  
E: [training@aoa.org.au](mailto:training@aoa.org.au)  
W: [www.aoa.org.au](http://www.aoa.org.au)

### **Orthopaedic Surgery New Zealand**

Education and Training Manager  
C/- New Zealand Orthopaedic  
Association  
P: +64 4 913 9898  
E: [prue@nzoa.org.nz](mailto:prue@nzoa.org.nz)  
W: [www.nzoa.org.nz](http://www.nzoa.org.nz)

### **Otolaryngology Head and Neck Surgery Australia**

National Education and Training Manager  
C/- Australian Society of Otolaryngology Head  
and Neck Surgery  
P: +61 2 9954 5856  
E: [OHNSTrainees@asohns.org.au](mailto:OHNSTrainees@asohns.org.au)  
W: [www.asohns.org.au](http://www.asohns.org.au)

### **Otolaryngology Head and Neck Surgery New Zealand**

Executive Officer: IMGs (NZ) and Training  
Royal Australasian College of Surgeons  
(NZ Office)  
P: +64 4 385 8247  
E: [celia.stanyon@surgeons.org](mailto:celia.stanyon@surgeons.org)  
E: [College.NZ@surgeons.org](mailto:College.NZ@surgeons.org)  
W: [www.surgeons.org](http://www.surgeons.org)

### **Paediatric Surgery**

Executive Officer  
Board of Paediatric Surgery  
Royal Australasian College of Surgeons  
P: +61 3 9276 7416  
E: [paediatric.board@surgeons.org](mailto:paediatric.board@surgeons.org)  
W: [www.surgeons.org](http://www.surgeons.org)

### **Plastic and Reconstructive Surgery Australia**

National Education and Training Manager  
C/- National Society of Plastic Surgeons  
P: +61 2 9437 9200  
E: [education@plasticsurgery.org.au](mailto:education@plasticsurgery.org.au)  
W: [www.plasticsurgery.org.au](http://www.plasticsurgery.org.au)

### **Plastic and Reconstructive Surgery New Zealand**

Executive Officer  
C/- New Zealand Association of Plastic  
Surgeons  
P: +64 4 803 3020  
E: [training@plasticsurgery.org.nz](mailto:training@plasticsurgery.org.nz)  
W: [www.plasticsurgery.org.nz](http://www.plasticsurgery.org.nz)

### **Urology**

Education and Training Manager  
Board of Urology  
C/- Urological Society of Australia and  
New Zealand  
P: +61 2 9362 8644  
E: [education@usanz.org.au](mailto:education@usanz.org.au)  
W: [www.usanz.org.au](http://www.usanz.org.au)

### **Vascular Surgery**

Executive Officer  
C/- Australian and New Zealand Society  
for Vascular Surgery  
P: +61 3 9249 1269  
E: [vascular.board@anzsvs.org.au](mailto:vascular.board@anzsvs.org.au)  
W: [www.surgeons.org](http://www.surgeons.org)  
W: [www.anzsvs.org.au](http://www.anzsvs.org.au)





# Appendix

---

## Appendix One: e-Modules

1.1 [Hand Hygiene e-Module](#) (National Hand Hygiene Initiative) – this will require an account and login for the [Australian Commission on Safety and Quality in Healthcare](#)

Instructions for navigating to correct Hand Hygiene e-module

### Hand Hygiene e-Module

From 1 November 2019, this module is supported by the Australian Commission on Safety and Quality in Health Care. The new website is:

<https://www.safetyandquality.gov.au/our-work/infection-prevention-and-control/national-hand-hygiene-initiative>

Click on the *Hand hygiene online learning modules* link.

On your home page you will see the e-modules you have completed.

Navigate to the list of Hand Hygiene e-modules.

Important:

The **only** module which is accepted for selection registration is the specific RACS module on the Australian Commission on Safety and Quality in Health Care. No other Hand Hygiene modules will be accepted.

On this page:

[Hand hygiene online learning modules](#)



You must make certain that the certificate you upload as part of your registration is for the correct module:



## 1.2 Operating with Respect e-Module

Access to the Operating with Respect e-Module is granted when you enrol in the RACS Generic Surgical Sciences Exam (GSSE).

Click the link or copy the following site into your browser:

<https://www.surgeons.org/Education/elearning-courses-and-resources/elearning-for-trainees-and-imgs>

Scroll down the page to eLearning courses for Trainees and SIMGs and select Operating with Respect. This will require a RACS login.



[Become a surgeon](#) ▾ [Trainees](#) ▾ [Fellows](#) ▾ [SIMGs](#) ▾ [Research & audit](#) ▾

[HOME](#) > [EDUCATION](#) > [ELEARNING COURSES AND RESOURCES](#) > [ELEARNING FOR TRAINEES AND IMGs](#)

# eLearning for Trainees and IMGs

eLearning courses and resources for Trainees and IMGs.

## On this page

[eLearning courses for Trainees and IMGs](#)

[Skills training eLearning modules](#)

[Exam preparation eLearning](#)

[Paediatric Surgery](#)

[Vascular Surgery](#)

## eLearning courses for Trainees and IMGs

- [Operating With Respect](#)

## Appendix Two: Examinations

2.1 Click the link or copy the following site into your browser:

<https://www.surgeons.org/en/Examinations/generic-surgical-sciences-examination-gsse>

The screenshot shows the website for the Generic Surgical Science Examination (GSSE). The header includes the Royal Australasian College of Surgeons logo and navigation links: 'Become a surgeon', 'Trainees', 'Fellows', 'SIMGs', and 'Research & audit'. The main content area is titled 'Generic Surgical Science Examination (GSSE)' and includes an 'Overview' section with a description of the exam and its purpose. Below this is a 'General information' section with expandable links for 'Key facts about the GSSE', 'Whats does the GSSE test?', 'GSSE policies', and 'Contact'. On the right side, there is a blue sidebar titled 'Details' containing a date selector (set to 'Feb 17, 2021'), the schedule ('17 and 18 February 2021'), location ('Adelaide, Brisbane, Melbourne, Perth, Sydney, Auckland and Wellington'), registration dates ('From 10 November 2020 to 15 December 2020'), contact person ('Examinations Department'), and contact information (Email: [examinations@surgeons.org](mailto:examinations@surgeons.org), Phone: 0421280457). At the bottom of the sidebar is a yellow 'APPLY' button.

Read through the general information and then, when you are ready to apply select a date from the drop down box in the blue column on the right.

For further enquiries, please contact the Examinations Department (see [contacts](#) page)

---

## Appendix Three: Specialty Societies and Selection Guidelines

3.1 Click the link or copy the following sites into your browser for the following societies in order to access further information regarding [Selection](#)\*:

- [Cardiothoracic Surgery](#)  
Society - Australian & New Zealand Society of Cardiac & Thoracic Surgeons ([ANZSCTS](#))  
<https://anzscts.org/>  
  
Guidelines  
<https://www.surgeons.org/become-a-surgeon/how-do-i-become-a-surgeon/set-selection-requirements-process-and-application/specialty-specific-eligibility-criteria-selection-processes/cardiothoracic-surgery>
- [General Surgery Australia](#)  
Guidelines and Society – General Surgeons Australia (GSA)  
<https://www.generalsurgeons.com.au/education-and-training/selection/selection-guidelines>
- [General Surgery New Zealand](#)  
Guidelines and Society – New Zealand Association of General Surgeons (NZAGS)  
<https://www.nzags.co.nz/education-training/selection/>
- [Neurosurgery](#)  
Guidelines and Society – Neurosurgical Society of Australia (NSA)  
[https://www.nsa.org.au/NSA/Neurosurgical\\_Training/Application\\_and\\_Selection/NSA/Neurosurgical\\_Training/Application\\_and\\_Selection.aspx?hkey=6ec738e7-a7c5-48e2-a871-32b6208d3dc7](https://www.nsa.org.au/NSA/Neurosurgical_Training/Application_and_Selection/NSA/Neurosurgical_Training/Application_and_Selection.aspx?hkey=6ec738e7-a7c5-48e2-a871-32b6208d3dc7)
- [Orthopaedic Surgery Australia](#)  
Guidelines and Society – Australian Orthopaedic Association (AOA)  
<https://www.aoa.org.au/orthopaedic-training/becoming-an-aoa-trainee>
- [Orthopaedic Surgery New Zealand](#)  
Guidelines and Society – New Zealand Orthopaedic Association (NZOA)  
<https://nzoa.org.nz/apply-nzoa-training-programme>
- [Otolaryngology Head and Neck Surgery Australia](#)  
Society – The Australian Society of Otolaryngology, Head and Neck Surgery ([ASOHNS](#))  
<http://www.asohns.org.au/about-us/surgical-education-and-training>  
  
Guidelines  
<http://www.asohns.org.au/trainees/application-and-selection>

- [Otolaryngology Head and Neck Surgery New Zealand](#)  
Society - The New Zealand Society of Otolaryngology, Head and Neck Surgery Inc. ([NZSOHNS](#))  
<https://www.orl.org.nz/about/surgical-education-training/>

Guidelines

<https://www.surgeons.org/become-a-surgeon/how-do-i-become-a-surgeon/set-selection-requirements-process-and-application/specialty-specific-eligibility-criteria-selection-processes/otolaryngology-head-and-neck-surgery-new-zealand>

- [Paediatric Surgery](#)

Guidelines

<https://www.surgeons.org/become-a-surgeon/how-do-i-become-a-surgeon/set-selection-requirements-process-and-application/specialty-specific-eligibility-criteria-selection-processes/paediatric-surgery>

Society - Australian and New Zealand Association of Paediatric Surgeons ([ANZAPS](#))

<https://www.anzaps.org/selection-to-set>

- [Plastic and Reconstructive Surgery New Zealand](#)

Guidelines and Society – New Zealand Association of Plastic Surgeons (NZAPS)

<http://plasticsurgery.org.nz/education-and-training/selection-for-training/>

- [Plastic and Reconstructive Surgery Australia](#)

Guidelines and Society – Australian Society of Plastic Surgeons (ASPS)

<https://plasticsurgery.org.au/about-asps/becoming-a-specialist-plastic-surgeon/selection-for-training/>

- [Urology](#)

Guidelines and Society – Urological Society of Australia and New Zealand (USANZ)

<https://www.usanz.org.au/educate-train/application-selection>

- [Vascular Surgery](#)

Guidelines and Society – Australian and New Zealand Society for Vascular Surgery (ANZSVS)

<https://www.anzsvs.org.au/education-training/selection/>

\*Selection link: <https://www.surgeons.org/Trainees/the-set-program>

---

## Appendix Four: Selection Checklist

4.1 Before applying to be a part of the Surgical Education and Training Program, make sure you check the list below and have achieved all 12 items. Failure to complete one or more of these items may result in your application being rejected.

- 
- ☐ **Hold General Medical Registration without conditions from the Medical Board of Australia (MBA) or General Scope Registration or restricted General Scope Registration without conditions in the relevant specialty from the Medical Council of New Zealand (MCNZ)**
  - ☐ **Be a citizen or permanent resident of Australia or New Zealand**
  - ☐ **Identify the surgical specialty (or specialties) you wish to apply for on the SET program and, if applicable, for which country.**
  - ☐ **Complete the RACS specified Hand Hygiene Module (see [Appendix One: e-Modules](#))**
  - ☐ **Check the RACS website for current SET Program information and specialty-specific eligibility requirements**
  - ☐ **Successfully pass the GSSE (in accordance with the deadline for this requirement in relevant specialty-specific selection regulations)**
  - ☐ **Complete the RACS Operating with Respect eLearning module (see [Appendix One: e-Modules](#))**
  - ☐ **Register for SET in January/February (fee payable)**
  - ☐ **Prepare documentation for SET application (list of rotations, contact details of supervisors/referees, evidence of qualifications, publications and achievements)**
  - ☐ **Sit the pilot Situational Judgment Test in April (you must complete this to progress in the application process)**
  - ☐ **Ensure that all specialty-specific eligibility requirements will be met within the published timeframe**
  - ☐ **Apply to chosen SET Program/s in February/March (fee payable)**
-





